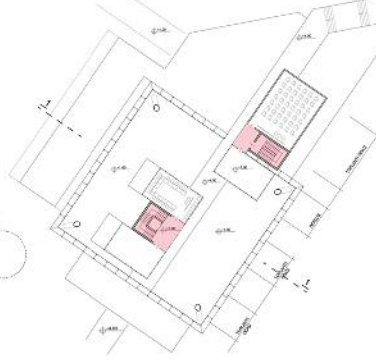
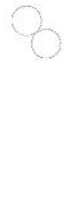
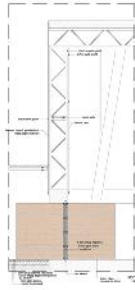
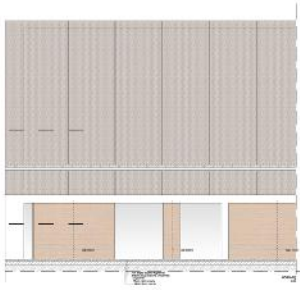


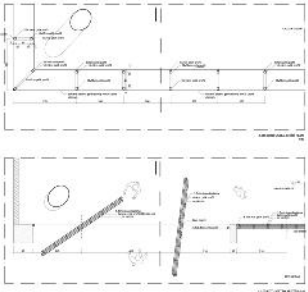
*A. Nil*  
senu

Portfolio  
2023

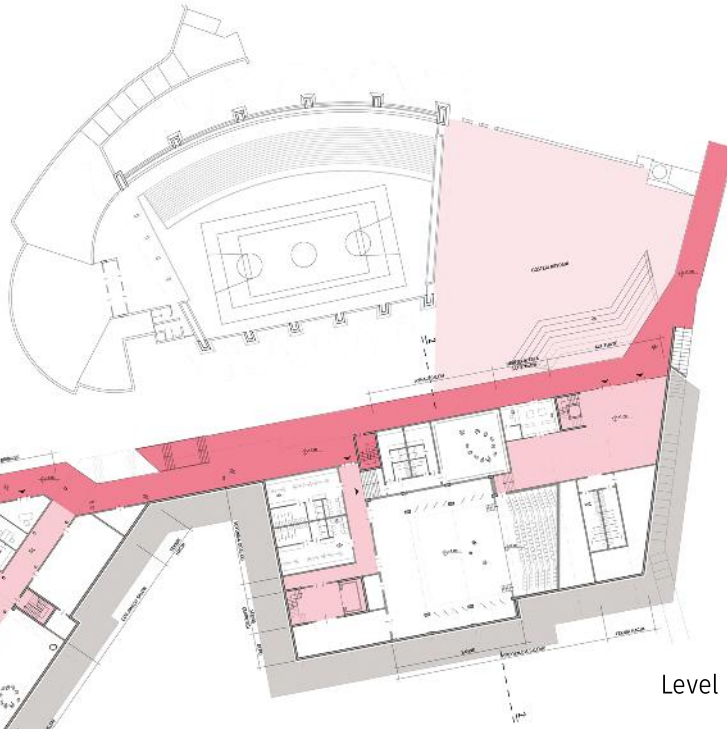
# METU Campus Competition 2010



Level +7



Details for Facade



Level +1

## +1,00 kotu

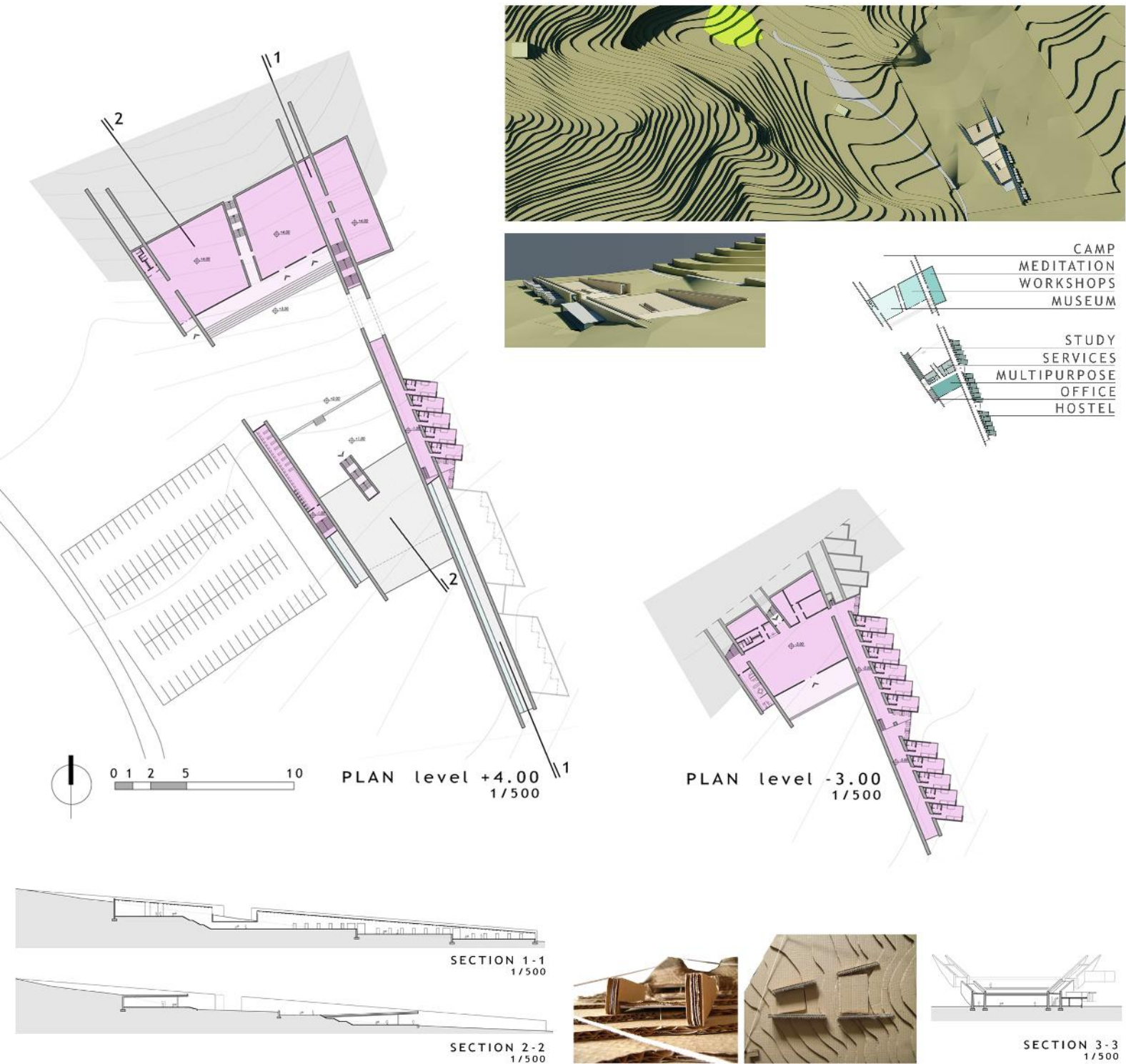
Topluluk Ofisleri	753 m <sup>2</sup>
Çok Amaçlı Salon	113 m <sup>2</sup>
İdari Birimler	103 m <sup>2</sup>
Topluluk Ofisleri WC	47 m <sup>2</sup>
Derslik	40 m <sup>2</sup>
Karanlık Oda	23 m <sup>2</sup>
Performans Salonu Sahnesi	410 m <sup>2</sup>
Ait Fuaye	232 m <sup>2</sup>
Hediyelek Eşya Satış Alanı	42 m <sup>2</sup>
Aynalı Salon	182 m <sup>2</sup>
Sahne Arkası Soyunma	164 m <sup>2</sup>
Sahne Arkası Depo	89 m <sup>2</sup>
Ait Fuaye WC	164 m <sup>2</sup>
Teknik Hacim	88 m <sup>2</sup>
Teknik Hacim	20 m <sup>2</sup>

+1,00 Kotu Toplam Brüt Alanı 2869 m<sup>2</sup>



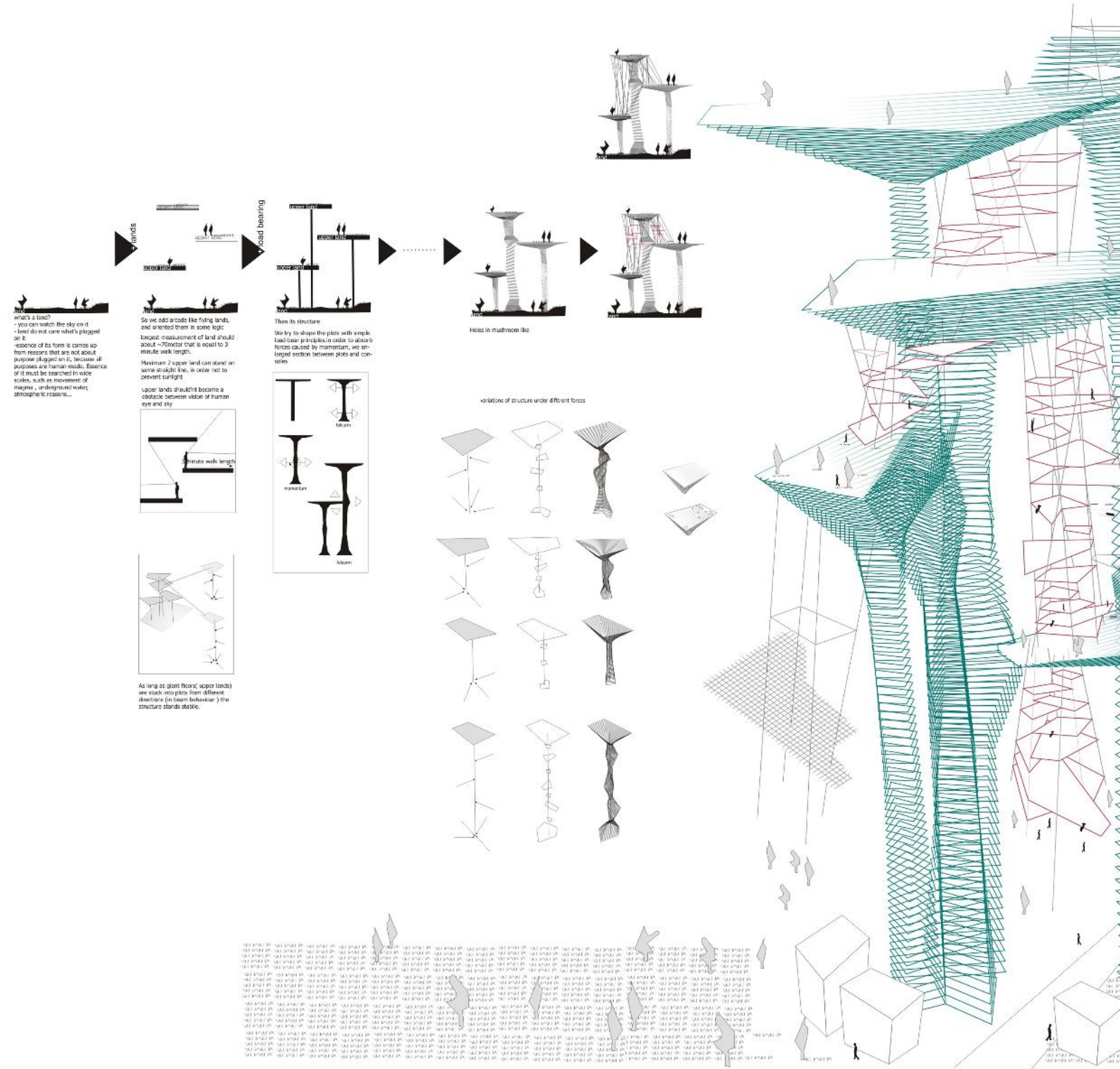
kesit1

kesit2



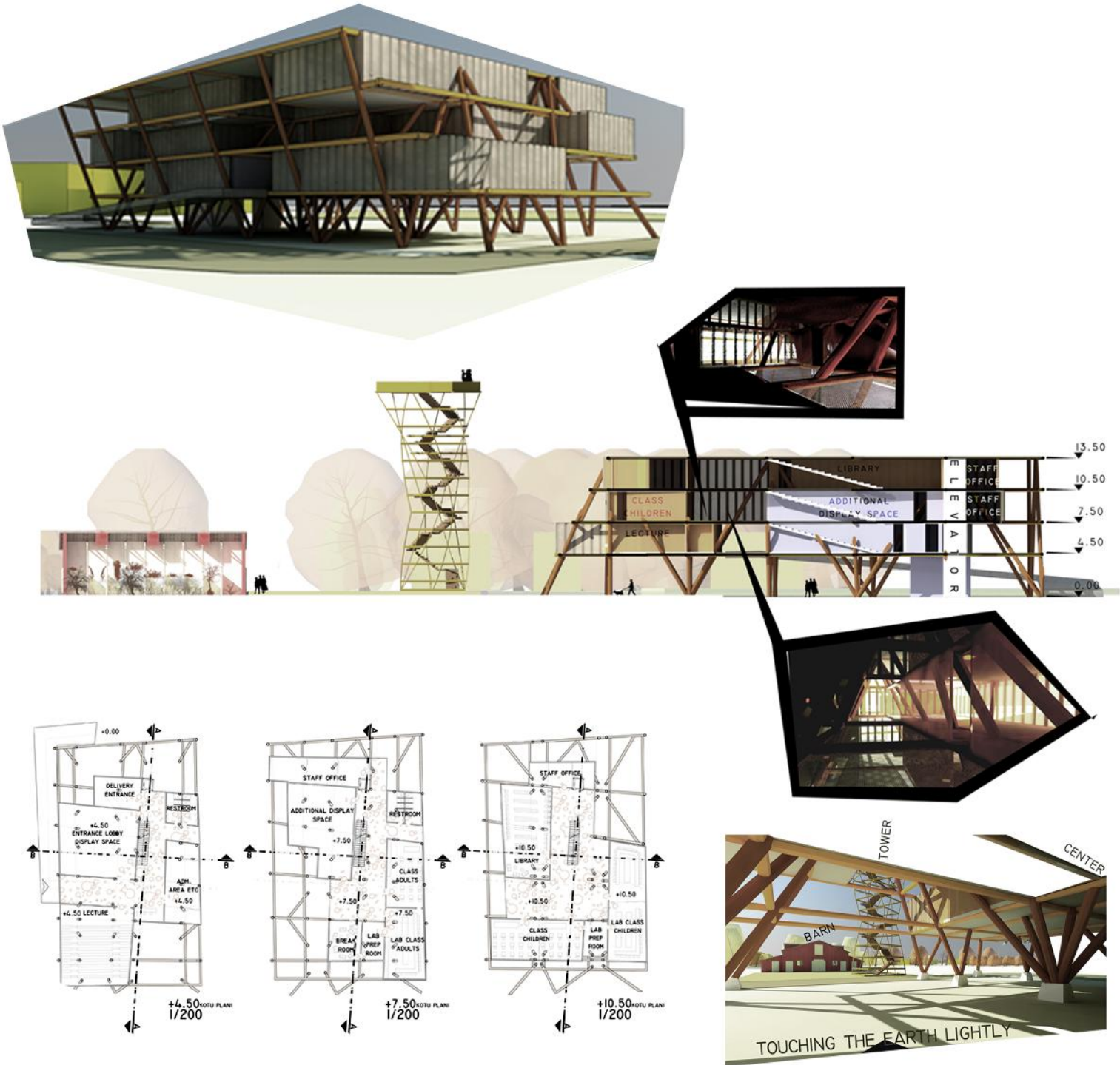


EvoLo Skyscraper Competition 2008



Design/Detailed Drawings/Site Work/Documentation/Coordination

Urban Environment and Agricultural Center 2010



Various International Projects 2010-2015

Ashgabat Olympic Complex Hotel  
Training Center  
Restaurant

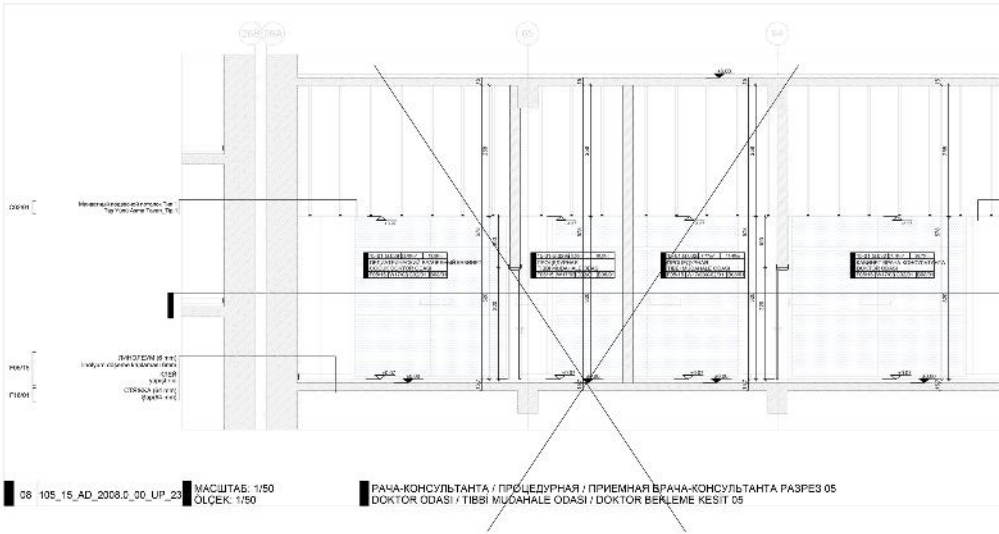
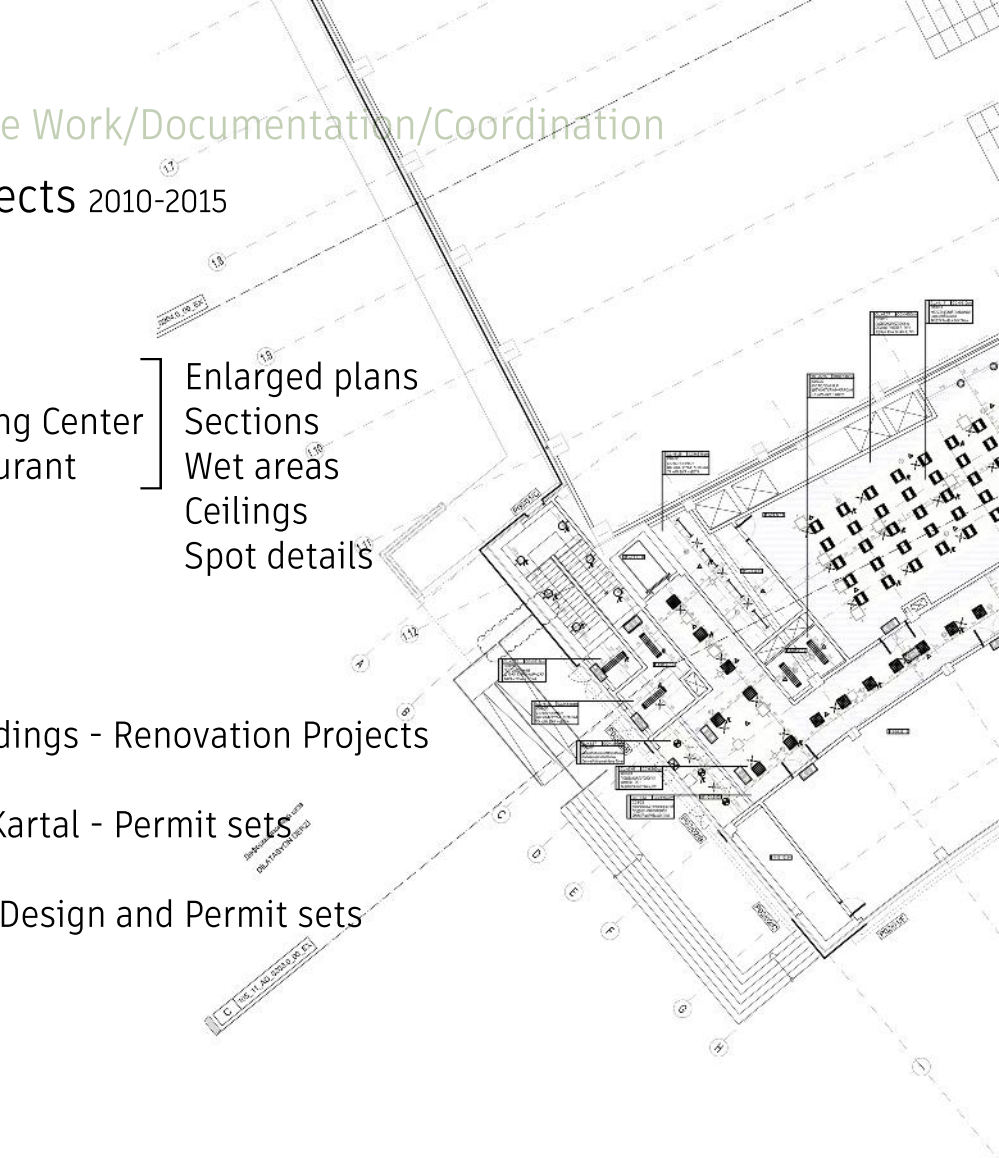
Enlarged plans  
Sections  
Wet areas  
Ceilings  
Spot details

Shahdagh Ski Center - Wet areas

Istanbul Tophane, Dolapdere Buildings - Renovation Projects

Istanbul Celebi Residence Tower Kartal - Permit sets

Boutique Hotel in Datca, Turkey - Design and Permit sets





Various International Projects 2011-2015

US Embassy Moscow - External Facade Shop Drawings

US Embassy Hague - Shop Drawings and Cutlist

External Facade  
Internal Facade  
Stone Flooring  
Landscape Flooring

US Embassy Mauritania - Shop Drawings and Cutlist

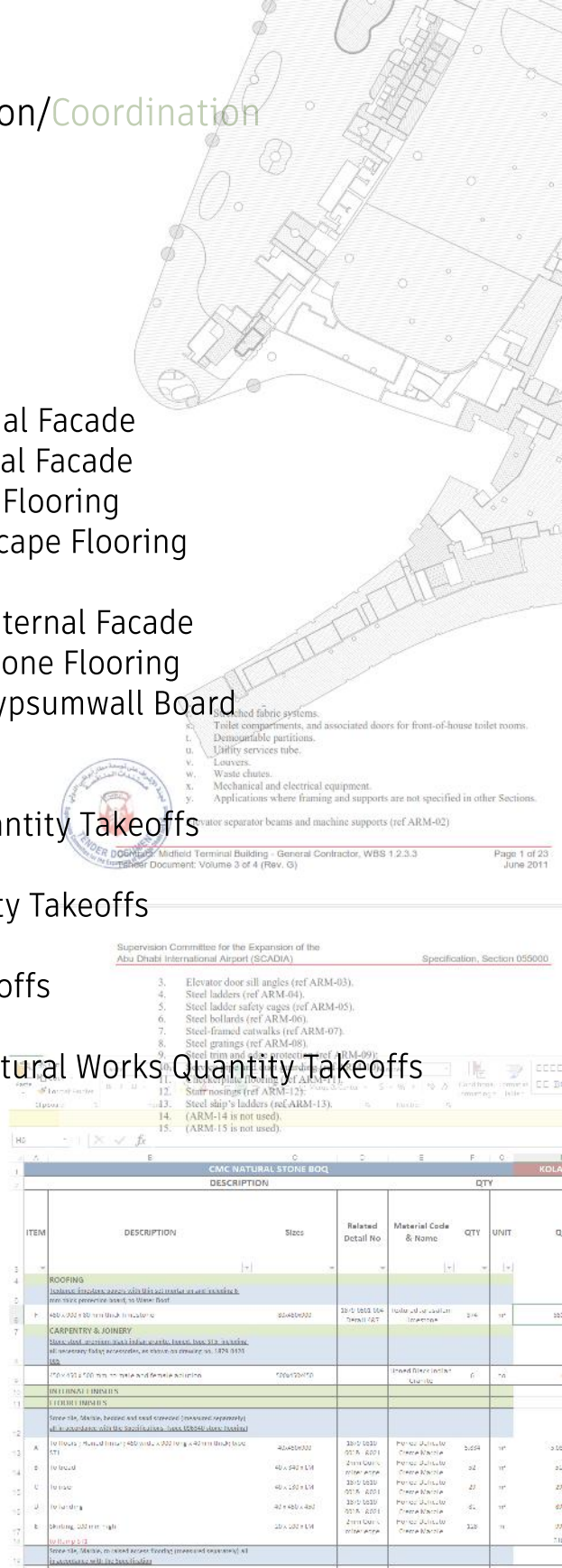
Internal Facade  
Stone Flooring  
Gypsumwall Board

Abu Dhabi International Airport - Architectural Works Quantity Takeoffs

Four Seasons Hotel Moscow - Architectural Works Quantity Takeoffs

Oman Muscat Airport - Architectural Works Quantity Takeoffs

Qatar Foundation of College Media and Comms. - Architectural Works Quantity Takeoffs



Design/Detailed Drawings/Site Work/Documentation/Coordination

St.Regis Astana Hotel and Residence, Kazakhstan 2015-2017

Mock-up Room - Tendering and bidding documentation

Value engineering works

Shop drawings for site works

Site works planning and controlling

Material and item approvals and RFIs follow up

Conducting meetings with stakeholders

Coordination of subcontractors

St.Regis Hotel Wing - Tendering and bidding documentation

Pre-tender cost control for interior works

Value engineering for interior works scope

Shop drawings for site works

Material and item approvals and RFIs follow up

BREEAM compliance verification

Conducting meetings with stakeholders

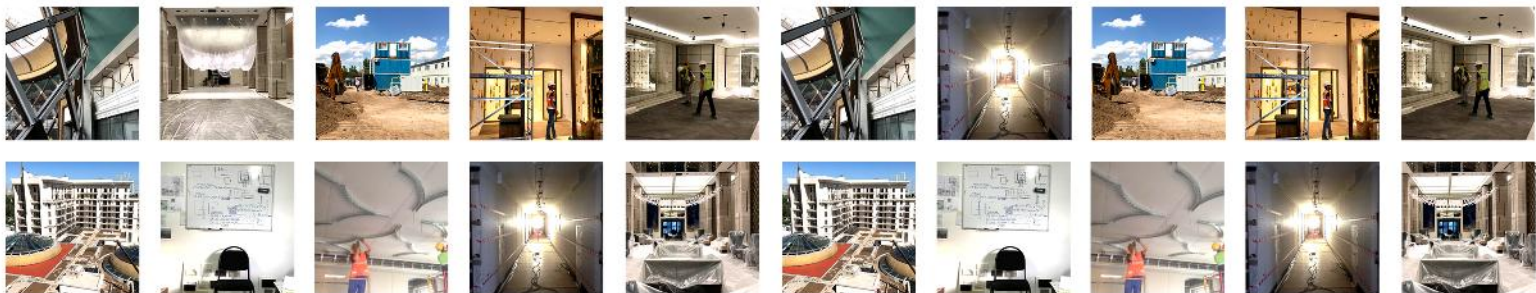
Coordination of subcontractors

Coordination within the site team

Quality inspection of the site works

Conducting permit drawings set for local agencies

St.Regis Residence Wing - Conducting permit drawings set for local agencies





## US Embassy Uganda New Office Annex 2018

New Office Annex Building - Coordination of team members and validating compliances to project requirements and specifications  
Following up LEED related documentation  
Ensuring design project phases are in sync with the team work  
Attending design coordination meetings in US and in Kampala  
Preparing RFIs  
Following up deliverables



### KAMPALA NEW OFFICE ANNEX



## HafenCity University - Resource Efficiency in Architecture and Planning Master Program 2019-2023

Written works - Resource Efficient Urban Regeneration of Informal Settlements in Tirana, Albania: Solutions for Ongoing Transformation.

Hamburg, St. Georg District, Urban Livability Analysis.

Relationship Between Defamation Cases in Number and Corruption Index for Turkey, A Regression Model Analysis.

The Toll of Climate Change and Conflict on Baghdad, Focus: Water Infrastructure.

Remediation Of Georgswerder Landfill Hamburg, for Legal and Economic Instruments Of Environmental Policy.

District Cooling in Helsinki, A Blog Post.

Stormwater Management of Amsterdam, for Urban Water Cycles.

Flat Glass Lifecycle, for Technologies for Sustainable Material Cycles.

District Heating System of Berlin, Economics and Planning of Technical Urban Infrastructure Systems.

Circularity Strategies in Portland, Oregon. Participation In London

Smart City Projects -An Analysis Using Arnstein's Ladder and The Democracy Cube.

**Final Thesis - Carbon Storage Capacity of Residential Buildings in Germany, Focus: Wood**